

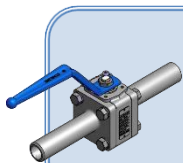
Valve			Seat and seals										Connection	
1. DIGIT	2. DIGIT		3. DIGIT		4. DIGIT		5. DIGIT		6. DIGIT		7. DIGIT			
Bore	Serie		Mat.	Body/Trim	Ball seat	Packing ring stem	Body seal 1	Body seal 2						
1	Full	1 SuperStar	5	LF2/316	S RPTFE ²⁾	G Graphite	S RPTFE ²⁾	G Graphite					BSP-P	Screw (Female)
2	Reduced	2 Standard	6	316L/316L ¹⁾	T PTFE	T PTFE	T PTFE	T PTFE					NPT	Screw (Female)
		3 MasterStar	9	Duplex/Duplex	G Graphite		G Graphite	V Viton ³⁾					BW	Butt weld ⁴⁾
		4 MetalStar	0	Special materials	P Peek		V Viton						IBW	Integral extended butt weld ⁴⁾
		5 CryoStar			N Devlon-V								XBW	Welded extended butt weld ⁴⁾
		6 MegaStar			M Metal								SW	Socket Weld ⁴⁾
		7 SplitStar											PN	EN558 flanged PN16-420
		8 3 way											ANSI	ANSI150-2500 flanged
		9 4 way												

¹⁾Double certified 316/316L

³⁾V as 2nd body seal is only available for 3- and 4- way

²⁾Reinforced PTFE 20% Carbon+5% Graphite

⁴⁾Pipe schedule/thickness mentioned after welded connection

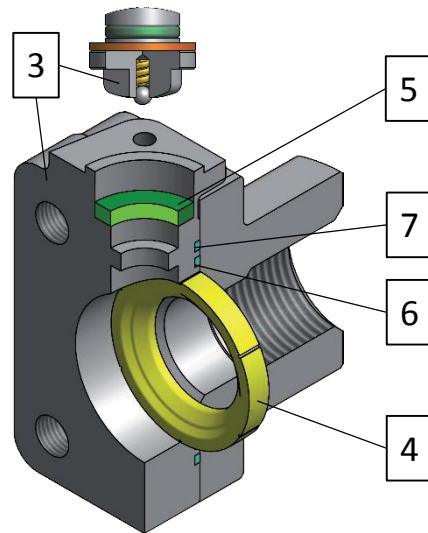


Example Code: DN25 235SGS-G/IBW SCH40

Size: DN25 Seat: RPTFE
 Bore: Reduced Packing ring stem: Graphite
 Serie: MasterStar 1st body seal: RPTFE
 Material: LF2/316 2nd body seal: Graphite
 Connection: Extended Integral BW Schedule 40

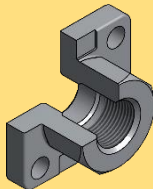
2

- Serie 1 SuperStar 3-piece ball valve, Encapsulated Seats
- Serie 2 Standard 3-piece ball valve, Long body bolts
- Serie 3 MasterStar 3-piece ball valve, Short body bolts
- Serie 4 MetalStar 2-piece ball valve, Metal Seats
- Serie 5 CryoStar 2-piece ball valve, Cryo valve
- Serie 6 MegaStar 3-piece ball valve, High pressure
- Serie 7 SplitStar 2-piece ball valve, Flanged
- Serie 8 3 way 3 way ball valve, L- or T-port
- Serie 9 4 way 4 way ball valve, L-, T- or X-port

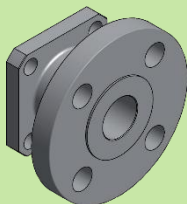


Connections:

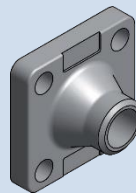
SCREW



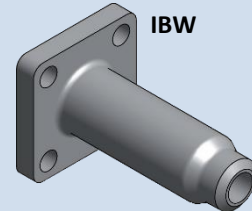
FLANGED



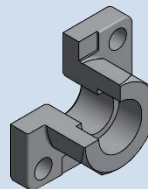
BW



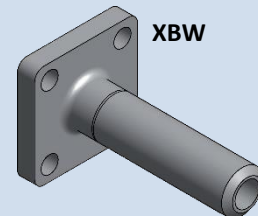
IBW



SW



XBW



WELDING ENDS