



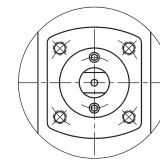
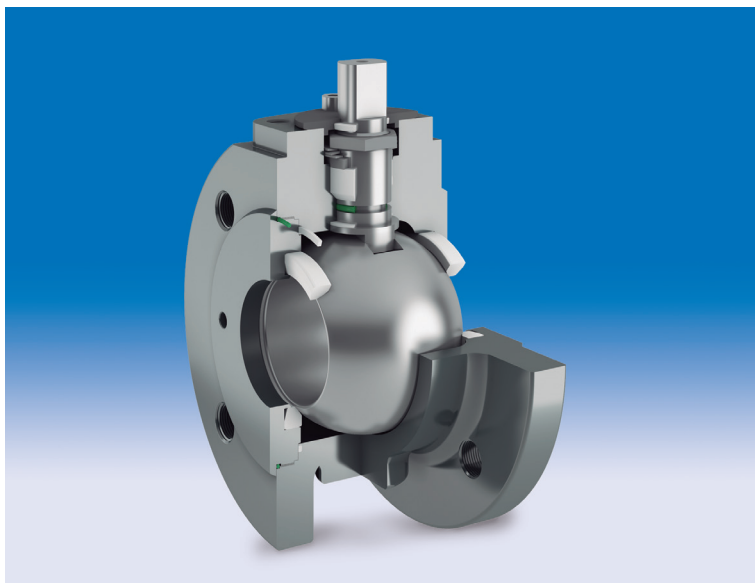
General features

- Construction DIN PN10 to PN40 (EN 12516, ISO 17292) and ANSI 150 lbs (API 6D, B16.34).
- Leak test as per EN 12266 part.1, API 598, API 6D and BS 6755 part. 1.
- Floating
- Full bore.
- End entry.

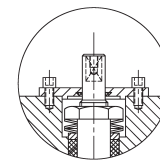
Official approvals

- CERTIFICATE FIRE SAFE
- TÜV.AD-MERKBLATT TWO
- TA-LUFT
- ATEX 94/9/EC
- API 6D
- PED 97/23/CE
- SIL 3 CAPABLE

Design advantages

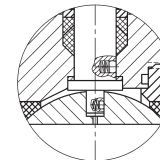


Top flange
ISO 5211



Guided stem

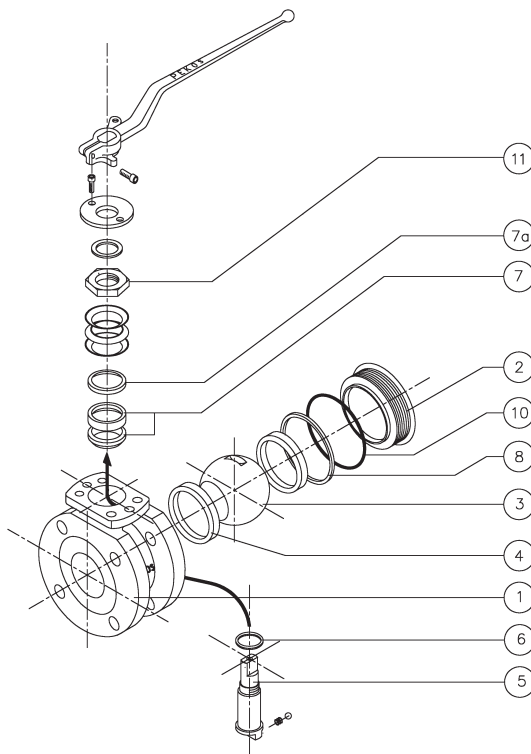
Stem packing
MAINTENANCE
FREE



Anti-blow
out stem

Antistatic
device

Standard construction materials

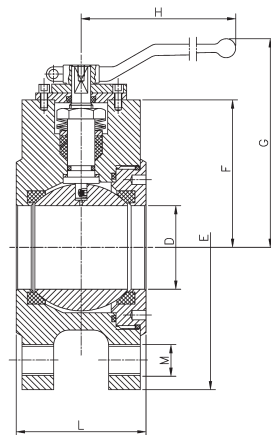


| Item | Description | Fig. 94 TTVV | Fig. 96 TTVV |
|------|-------------|--------------------|--------------------|
| 1 | Body 1 | 1.0619 / A216 WCC | 1.4408 / A351 CF8M |
| 2 | Body 2 | A-105 | 1.4401 / AISI 316 |
| 3 | Ball | 1.4408 / A351 CF8M | |
| 4 | Seats | PTFE (T) | |
| 5 | Stem | 1.4401 / AISI 316 | |
| 6 | Stem seal | PTFE + FG (R) | |
| 7 | Packing 1 | PTFE (T) | |
| 7a | Packing 2 | 1.4401 / AISI 316 | |
| 8 | Body seal 1 | PTFE (T) | |
| 10 | Body seal 2 | VITON (V) | |
| 11 | Stem nut | 1.4305 / AISI303 | |

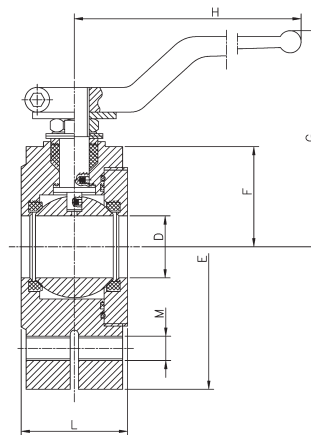
Dimensions

| DN (DIN) | NPS (ANSI) | D | L | E | F | G | H | M (DIN) | Holes (DIN) | M (ANSI) | Holes (ANSI) | ISO 5211 | Weight (kg) | Valve type |
|----------|------------|----|-----|-----|-----|-----|-----|---------|-------------|----------|--------------|----------|-------------|------------|
| 15 | 1/2" | 15 | 35 | 95 | 37 | 102 | 185 | M12 | 4 | 1/2" W | 4 | F03 | 1,6 | B |
| 20 | 3/4" | 20 | 35 | 105 | 37 | 102 | 185 | M12 | 4 | 1/2" W | 4 | F03 | 1,9 | B |
| 25 | 1" | 25 | 43 | 115 | 41 | 106 | 185 | M12 | 4 | 1/2" W | 4 | F03 | 2,7 | B |
| 32 | 1 1/4" | 30 | 51 | 140 | 63 | 115 | 185 | M16 | 4 | 1/2" W | 4 | F05 | 5,3 | A |
| 40 | 1 1/2" | 38 | 64 | 150 | 75 | 129 | 185 | M16 | 4 | 1/2" W | 4 | F05 | 5 | A |
| 50 | 2" | 50 | 85 | 165 | 83 | 137 | 293 | M16 | 4 | 5/8" W | 4 | F07 | 7,4 | A |
| 65* | 2 1/2" | 64 | 103 | 185 | 97 | 150 | 293 | M16 | 4 | 5/8" W | 4 | F07 | 10,3 | A |
| 80 | 3" | 75 | 120 | 200 | 110 | 185 | 350 | M16 | 8 | 5/8" W | 4 | F10 | 14,4 | A |
| 100* | 4" | 98 | 155 | 220 | 126 | 200 | 350 | M16 | 8 | 5/8" W | 8 | F10 | 21,8 | A |

DIN DN65 and DN100 only available PN16.



Type A

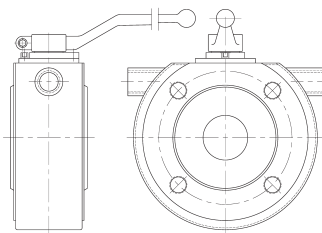


Type B

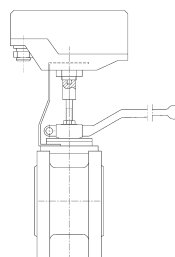
Breakaway torques (Nm)

| DN NPS | 15 1/2" | 20 3/4" | 25 1" | 32 1 1/4" | 40 1 1/2" | 50 2" | 65 2 1/2" | 80 3" | 100 4" |
|---------------------|---------|---------|-------|-----------|-----------|-------|-----------|-------|--------|
| PN16 - ANSI 150lbs. | 8 | 8 | 14 | 20 | 31 | 42 | 55 | 78 | 105 |
| PN40 | 11 | 11 | 17 | 28 | 60 | 85 | - | 115 | - |

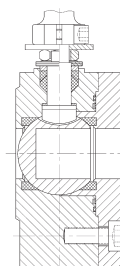
Others



Heating jacket



Limit switch



Sampling valve